

WERRIS CREEK COAL EPL – MONTHLY SUMMARY

Site Information

EPL No.: 12290

EPA Website Link: <http://www.epa.nsw.gov.au/prpoeoapp/ViewPOEOLicence.aspx?DOCID=31280&SYSUID=1&LICID=12290>

Licensee: Werris Creek Coal Pty Limited

Premises: Werris Creek Coal, 1435 Werris Creek Road, WERRIS CREEK NSW 2341

EPL Monitoring Points: See figure at end of document

Sampling Period: JANUARY 2025

Obtained Date: 03/03/2024

Publication Date: 04/03/2024

Table 1 - No Pollutant Limits Apply

EPL ID	Pollutant	Units of Measure	Monitoring Frequency	No. of Measurements for the Month	Date Sampled	Date Obtained	Min Value	Mean Value	Median Value	Max Value
28	PM10	µg/m ³	Every 6 days	6	30/01/2025	03/03/2025	2.3	7.8	4.8	16.4
	Solid Particles	g/m ² /month	Continuous	1	3/01/2025	20/01/2025	0.5	0.5	0.5	0.5
29	PM10	µg/m ³	Every 6 days	6	30/01/2025	03/03/2025	4.2	15.6	20.4	25.4
	Solid Particles	g/m ² /month	Continuous	1	3/01/2025	20/01/2025	0.8	0.8	0.8	0.8
30	PM10	µg/m ³	Continuous	Continuous	31/01/2025	01/02/2025	8.0	14.5	14.9	21.0
	Solid Particles	g/m ² /month	Continuous	1	3/01/2025	20/01/2025	0.8	0.8	0.8	0.8
10	Conductivity	µS/cm	Special Frequency 1	0*	-	-	-	-	-	-
	Nitrate	mg/L	Special Frequency 1	0*	-	-	-	-	-	-
	Nitrogen (Total)	mg/L	Special Frequency 1	0*	-	-	-	-	-	-
	Phosphorus (Total)	mg/L	Special Frequency 1	0*	-	-	-	-	-	-
	Reactive Phosphorus	mg/L	Special Frequency 1	0*	-	-	-	-	-	-
12	Conductivity	µS/cm	Special Frequency 1	0*	-	-	-	-	-	-
	Nitrate	mg/L	Special Frequency 1	0*	-	-	-	-	-	-
	Nitrogen (Total)	mg/L	Special Frequency 1	0*	-	-	-	-	-	-
	Phosphorus (Total)	mg/L	Special Frequency 1	0*	-	-	-	-	-	-
	Reactive Phosphorus	mg/L	Special Frequency 1	0*	-	-	-	-	-	-

WERRIS CREEK COAL EPL – MONTHLY SUMMARY

EPL ID	Pollutant	Units of Measure	Monitoring Frequency	No. of Measurements for the Month	Date Sampled	Date Obtained	Min Value	Mean Value	Median Value	Max Value
14	Conductivity	µS/cm	Special Frequency 1	0*	-	-	-	-	-	-
	Nitrate	mg/L	Special Frequency 1	0*	-	-	-	-	-	-
	Nitrogen (Total)	mg/L	Special Frequency 1	0*	-	-	-	-	-	-
	Phosphorus (Total)	mg/L	Special Frequency 1	0*	-	-	-	-	-	-
	Reactive Phosphorus	mg/L	Special Frequency 1	0*	-	-	-	-	-	-
32	Conductivity	µS/cm	Special Frequency 1	0*	-	-	-	-	-	-
	Nitrate	mg/L	Special Frequency 1	0*	-	-	-	-	-	-
	Nitrogen (Total)	mg/L	Special Frequency 1	0*	-	-	-	-	-	-
	Oil and Grease	mg/L	Special Frequency 1	0*	-	-	-	-	-	-
	pH	pH	Special Frequency 1	0*	-	-	-	-	-	-
	Phosphorus (Total)	mg/L	Special Frequency 1	0*	-	-	-	-	-	-
	Reactive Phosphorus	mg/L	Special Frequency 1	0*	-	-	-	-	-	-
23	Total Suspended Solids	mg/L	Special Frequency 1	0*	-	-	-	-	-	-
	Conductivity	µS/cm	Special Frequency 2	0*	-	-	-	-	-	-
	Nitrate	mg/L	Special Frequency 2	0*	-	-	-	-	-	-
	Nitrogen (Total)	mg/L	Special Frequency 2	0*	-	-	-	-	-	-
	Oil and Grease	mg/L	Special Frequency 2	0*	-	-	-	-	-	-
	pH	pH	Special Frequency 2	0*	-	-	-	-	-	-
	Phosphorus (Total)	mg/L	Special Frequency 2	0*	-	-	-	-	-	-
	Reactive Phosphorus	mg/L	Special Frequency 2	0*	-	-	-	-	-	-
24	Total Suspended Solids	mg/L	Special Frequency 2	0*	-	-	-	-	-	-
	Conductivity	µS/cm	Special Frequency 2	0*	-	-	-	-	-	-
	Nitrate	mg/L	Special Frequency 2	0*	-	-	-	-	-	-
	Nitrogen (Total)	mg/L	Special Frequency 2	0*	-	-	-	-	-	-
24	Oil and Grease	mg/L	Special Frequency 2	0*	-	-	-	-	-	-

WERRIS CREEK COAL EPL – MONTHLY SUMMARY

EPL ID	Pollutant	Units of Measure	Monitoring Frequency	No. of Measurements for the Month	Date Sampled	Date Obtained	Min Value	Mean Value	Median Value	Max Value
	pH	pH	Special Frequency 2	0*	-	-	-	-	-	-
	Phosphorus (Total)	mg/L	Special Frequency 2	0*	-	-	-	-	-	-
	Reactive Phosphorus	mg/L	Special Frequency 2	0*	-	-	-	-	-	-
	Total Suspended Solids	mg/L	Special Frequency 2	0*	-	-	-	-	-	-
25	Conductivity	µS/cm	Special Frequency 2	0*	-	-	-	-	-	-
	Nitrate	mg/L	Special Frequency 2	0*	-	-	-	-	-	-
	Nitrogen (Total)	mg/L	Special Frequency 2	0*	-	-	-	-	-	-
	Oil and Grease	mg/L	Special Frequency 2	0*	-	-	-	-	-	-
	pH	pH	Special Frequency 2	0*	-	-	-	-	-	-
	Phosphorus (Total)	mg/L	Special Frequency 2	0*	-	-	-	-	-	-
	Reactive Phosphorus	mg/L	Special Frequency 2	0*	-	-	-	-	-	-
26	Total Suspended Solids	mg/L	Special Frequency 2	0*	-	-	-	-	-	-
	Conductivity	µS/cm	Special Frequency 2	0*	-	-	-	-	-	-
	Nitrate	mg/L	Special Frequency 2	0*	-	-	-	-	-	-
	Nitrogen (Total)	mg/L	Special Frequency 2	0*	-	-	-	-	-	-
	Oil and Grease	mg/L	Special Frequency 2	0*	-	-	-	-	-	-
	pH	pH	Special Frequency 2	0*	-	-	-	-	-	-
	Phosphorus (Total)	mg/L	Special Frequency 2	0*	-	-	-	-	-	-
	Reactive Phosphorus	mg/L	Special Frequency 2	0*	-	-	-	-	-	-
33	Total Suspended Solids	mg/L	Special Frequency 2	0*	-	-	-	-	-	-
	Aluminium (dissolved)	mg/L	Special Frequency 3	0*	-	-	-	-	-	-
	Arsenic (dissolved)	mg/L	Special Frequency 3	0*	-	-	-	-	-	-
	Barium (dissolved)	mg/L	Special Frequency 3	0*	-	-	-	-	-	-

WERRIS CREEK COAL EPL – MONTHLY SUMMARY

EPL ID	Pollutant	Units of Measure	Monitoring Frequency	No. of Measurements for the Month	Date Sampled	Date Obtained	Min Value	Mean Value	Median Value	Max Value
	Beryllium (dissolved)	mg/L	Special Frequency 3	0*	-	-	-	-	-	-
	BOD	mg/L	Special Frequency 3	0*	-	-	-	-	-	-
	Cadmium (dissolved)	mg/L	Special Frequency 3	0*	-	-	-	-	-	-
	Chromium (dissolved)	mg/L	Special Frequency 3	0*	-	-	-	-	-	-
	Cobalt (dissolved)	mg/L	Special Frequency 3	0*	-	-	-	-	-	-
	Copper (dissolved)	mg/L	Special Frequency 3	0*	-	-	-	-	-	-
	Iron (dissolved)	mg/L	Special Frequency 3	0*	-	-	-	-	-	-
	Lead (dissolved)	mg/L	Special Frequency 3	0*	-	-	-	-	-	-
	Magnesium	mg/L	Special Frequency 3	0*	-	-	-	-	-	-
	Manganese (dissolved)	mg/L	Special Frequency 3	0*	-	-	-	-	-	-
	Nickel (dissolved)	mg/L	Special Frequency 3	0*	-	-	-	-	-	-
	Potassium	mg/L	Special Frequency 3	0*	-	-	-	-	-	-
	Selenium (dissolved)	mg/L	Special Frequency 3	0*	-	-	-	-	-	-
	Sodium	mg/L	Special Frequency 3	0*	-	-	-	-	-	-
	Total dissolved solids	mg/L	Special Frequency 3	0*	-	-	-	-	-	-
	Vanadium (dissolved)	mg/L	Special Frequency 3	0*	-	-	-	-	-	-
	Zinc (dissolved)	mg/L	Special Frequency 3	0*	-	-	-	-	-	-
34	Aluminium (dissolved)	mg/L	Special Frequency 3	0*	-	-	-	-	-	-
	Arsenic (dissolved)	mg/L	Special Frequency 3	0*	-	-	-	-	-	-
	Barium (dissolved)	mg/L	Special Frequency 3	0*	-	-	-	-	-	-
	Beryllium (dissolved)	mg/L	Special Frequency 3	0*	-	-	-	-	-	-
	BOD	mg/L	Special Frequency 3	0*	-	-	-	-	-	-
	Cadmium (dissolved)	mg/L	Special Frequency 3	0*	-	-	-	-	-	-
	Chromium (dissolved)	mg/L	Special Frequency 3	0*	-	-	-	-	-	-

WERRIS CREEK COAL EPL – MONTHLY SUMMARY

EPL ID	Pollutant	Units of Measure	Monitoring Frequency	No. of Measurements for the Month	Date Sampled	Date Obtained	Min Value	Mean Value	Median Value	Max Value
	Cobalt (dissolved)	mg/L	Special Frequency 3	0*	-	-	-	-	-	-
	Copper (dissolved)	mg/L	Special Frequency 3	0*	-	-	-	-	-	-
	Iron (dissolved)	mg/L	Special Frequency 3	0*	-	-	-	-	-	-
	Lead (dissolved)	mg/L	Special Frequency 3	0*	-	-	-	-	-	-
	Magnesium	mg/L	Special Frequency 3	0*	-	-	-	-	-	-
	Manganese (dissolved)	mg/L	Special Frequency 3	0*	-	-	-	-	-	-
	Nickel (dissolved)	mg/L	Special Frequency 3	0*	-	-	-	-	-	-
	Potassium	mg/L	Special Frequency 3	0*	-	-	-	-	-	-
	Selenium (dissolved)	mg/L	Special Frequency 3	0*	-	-	-	-	-	-
	Sodium	mg/L	Special Frequency 3	0*	-	-	-	-	-	-
	Total dissolved solids	mg/L	Special Frequency 3	0*	-	-	-	-	-	-
	Vanadium (dissolved)	mg/L	Special Frequency 3	0*	-	-	-	-	-	-
	Zinc (dissolved)	mg/L	Special Frequency 3	0*	-	-	-	-	-	-
35	Aluminium (dissolved)	mg/L	Special Frequency 3	0*	-	-	-	-	-	-
	Arsenic (dissolved)	mg/L	Special Frequency 3	0*	-	-	-	-	-	-
	Barium (dissolved)	mg/L	Special Frequency 3	0*	-	-	-	-	-	-
	Beryllium (dissolved)	mg/L	Special Frequency 3	0*	-	-	-	-	-	-
	BOD	mg/L	Special Frequency 3	0*	-	-	-	-	-	-
	Cadmium (dissolved)	mg/L	Special Frequency 3	0*	-	-	-	-	-	-
	Chromium (dissolved)	mg/L	Special Frequency 3	0*	-	-	-	-	-	-
	Cobalt (dissolved)	mg/L	Special Frequency 3	0*	-	-	-	-	-	-
	Copper (dissolved)	mg/L	Special Frequency 3	0*	-	-	-	-	-	-
	Iron (dissolved)	mg/L	Special Frequency 3	0*	-	-	-	-	-	-
	Lead (dissolved)	mg/L	Special Frequency 3	0*	-	-	-	-	-	-

WERRIS CREEK COAL EPL – MONTHLY SUMMARY

EPL ID	Pollutant	Units of Measure	Monitoring Frequency	No. of Measurements for the Month	Date Sampled	Date Obtained	Min Value	Mean Value	Median Value	Max Value
	Magnesium	mg/L	Special Frequency 3	0*	-	-	-	-	-	-
	Manganese (dissolved)	mg/L	Special Frequency 3	0*	-	-	-	-	-	-
	Nickel (dissolved)	mg/L	Special Frequency 3	0*	-	-	-	-	-	-
	Potassium	mg/L	Special Frequency 3	0*	-	-	-	-	-	-
	Selenium (dissolved)	mg/L	Special Frequency 3	0*	-	-	-	-	-	-
	Sodium	mg/L	Special Frequency 3	0*	-	-	-	-	-	-
	Total dissolved solids	mg/L	Special Frequency 3	0*	-	-	-	-	-	-
	Vanadium (dissolved)	mg/L	Special Frequency 3	0*	-	-	-	-	-	-
	Zinc (dissolved)	mg/L	Special Frequency 3	0*	-	-	-	-	-	-

¹NS – No sample.

'c' = contaminated sample

Table 2 - Pollutant Limits Apply

EPL ID	Pollutant	Units of Measure	Monitoring Frequency	No. of samples for the Month	Date Sampled	Date Obtained	Min Value	Max Value	100%ile Limit	Exceedance (Yes/No)	Comments
10	Total Suspended Solids	mg/L	Special Frequency 1	0*	-	-	-	-	50~	No	
	Oil and Grease	mg/L	Special Frequency 1	0*	-	-	-	-	10	No	
	pH	pH	Special Frequency 1	0*	-	-	-	-	6.5-8.5	No	
12	Total Suspended Solids	mg/L	Special Frequency 1	0*	-	-	-	-	50~	No	
	Oil and Grease	mg/L	Special Frequency 1	0*	-	-	-	-	10	No	

WERRIS CREEK COAL EPL – MONTHLY SUMMARY

EPL ID	Pollutant	Units of Measure	Monitoring Frequency	No. of samples for the Month	Date Sampled	Date Obtained	Min Value	Max Value	100%ile Limit	Exceedance (Yes/No)	Comments
	pH	pH	Special Frequency 1	0*	-	-	-	-	6.5-8.5	No	
14	Total Suspended Solids	mg/L	Special Frequency 1	0*	-	-	-	-	50~	No	
	Oil and Grease	mg/L	Special Frequency 1	0*	-	-	-	-	10	No	
	pH	pH	Special Frequency 1	0*	-	-	-	-	6.5-8.5	No	
32	Total Suspended Solids	mg/L	Special Frequency 1	0*	-	-	-	-	2000	No	
	Oil and Grease	mg/L	Special Frequency 1	0*	-	-	-	-	10	No	
	pH	pH	Special Frequency 1	0*	-	-	-	-	9	No	
33	Electrical Conductivity	µS/cm	Special Frequency 4	0*	-	-	-	-	2000	No	
	Oil and Grease	mg/L	Special Frequency 3	0*	-	-	-	-	10	No	
	pH	pH	Special Frequency 4	0*	-	-	-	-	9	No	
34	Electrical Conductivity	µS/cm	Special Frequency 4	0*	-	-	-	-	2000	No	
	Oil and Grease	mg/L	Special Frequency 3	0*	-	-	-	-	10	No	
	pH	pH	Special Frequency 4	0*	-	-	-	-	9	No	
35	Electrical Conductivity	µS/cm	Special Frequency 4	0*	-	-	-	-	2000	No	
	Oil and Grease	mg/L	Special Frequency 3	0*	-	-	-	-	10	No	
	pH	pH	Special Frequency 4	0*	-	-	-	-	9	No	

~ Total Suspended Solids permitted to exceed 50mg/L if 5 day rainfall is greater than 39.2mm prior to discharge

*No Special Frequency Events occurred during Sampling Period, therefore no data has been collected.

The discharge sample was inconsistent with pre-discharge sampling of the dam and has been discussed with the EPA. This will be documented in the Annual Return.

- For the purposes of this condition, Special Frequency 1 means as soon as practicable after overflow commences and in any case not more than 12 hours after any overflow commencing.



WERRIS CREEK COAL EPL – MONTHLY SUMMARY

- For the purposes of this condition, Special Frequency 2 means within 12 hours after any overflow from a storage dam(s) on the premises occurring.
- For the purposes of this condition, Special Frequency 3 means every three months. If no mine void water is planned to be provided for agricultural purposes within the three months following scheduled sampling, then sampling is not required.
- For the purposes of this condition, Special Frequency 4 means prior to, but not more than 24 hours prior to providing mine void water for agricultural purposes and then weekly thereafter, until the provision of water ceases. Samples are only required to be taken from the void water dam that is supplying water for agricultural purposes.

WERRIS CREEK COAL EPL – MONTHLY SUMMARY

Table 3 – Monitoring (Quarterly & 6 monthly – no limits apply)

EPL ID	Pollutant	Units of Measure	Monitoring Frequency	No. of Measurements for the Period	Date Sampled	Date Obtained	Min Value	Mean Value	Median Value	Max Value
16	Conductivity	µS/cm	Every 3 Months	0*	-	-	-	-	-	-
	Nitrate	mg/L	Every 3 Months	0*	-	-	-	-	-	-
	Nitrogen (Total)	mg/L	Every 3 Months	0*	-	-	-	-	-	-
	Oil and Grease	mg/L	Every 3 Months	0*	-	-	-	-	-	-
	pH	pH	Every 3 Months	0*	-	-	-	-	-	-
	Phosphorus (Total)	mg/L	Every 3 Months	0*	-	-	-	-	-	-
	Reactive Phosphorus	mg/L	Every 3 Months	0*	-	-	-	-	-	-
27	Total Suspended Solids	mg/L	Every 3 Months	0*	-	-	-	-	-	-
	Conductivity	µS/cm	Every 3 Months	0*	-	-	-	-	-	-
	Nitrate	mg/L	Every 3 Months	0*	-	-	-	-	-	-
	Nitrogen (Total)	mg/L	Every 3 Months	0*	-	-	-	-	-	-
	Oil and Grease	mg/L	Every 3 Months	0*	-	-	-	-	-	-
	pH	pH	Every 3 Months	0*	-	-	-	-	-	-
	Phosphorus (Total)	mg/L	Every 3 Months	0*	-	-	-	-	-	-
17	Reactive Phosphorus	mg/L	Every 3 Months	0*	-	-	-	-	-	-
	Total Suspended Solids	mg/L	Every 3 Months	0*	-	-	-	-	-	-
	Conductivity	µS/cm	Every 6 Months	0*	-	-	-	-	-	-
	Nitrate	mg/L	Every 6 Months	0*	-	-	-	-	-	-
17	Nitrogen (Total)	mg/L	Every 6 Months	0*	-	-	-	-	-	-
	pH	pH	Every 6 Months	0*	-	-	-	-	-	-

WERRIS CREEK COAL EPL – MONTHLY SUMMARY

EPL ID	Pollutant	Units of Measure	Monitoring Frequency	No. of Measurements for the Period	Date Sampled	Date Obtained	Min Value	Mean Value	Median Value	Max Value
	Phosphorus (Total)	mg/L	Every 6 Months	0*	-	-	-	-	-	-
	Reactive Phosphorus	mg/L	Every 6 Months	0*	-	-	-	-	-	-
	Standing Water Level	Metres	Every 6 Months	0*	-	-	-	-	-	-
18	Conductivity	µS/cm	Every 6 Months	0*	-	-	-	-	-	-
	Nitrate	mg/L	Every 6 Months	0*	-	-	-	-	-	-
	Nitrogen (Total)	mg/L	Every 6 Months	0*	-	-	-	-	-	-
	pH	pH	Every 6 Months	0*	-	-	-	-	-	-
	Phosphorus (Total)	mg/L	Every 6 Months	0*	-	-	-	-	-	-
	Reactive Phosphorus	mg/L	Every 6 Months	0*	-	-	-	-	-	-
	Standing Water Level	Metres	Every 6 Months	0*	-	-	-	-	-	-
19	Conductivity	µS/cm	Every 6 Months	0*	-	-	-	-	-	-
	Nitrate	mg/L	Every 6 Months	0*	-	-	-	-	-	-
	Nitrogen (Total)	mg/L	Every 6 Months	0*	-	-	-	-	-	-
	pH	pH	Every 6 Months	0*	-	-	-	-	-	-
	Phosphorus (Total)	mg/L	Every 6 Months	0*	-	-	-	-	-	-
	Reactive Phosphorus	mg/L	Every 6 Months	0*	-	-	-	-	-	-
	Standing Water Level	Metres	Every 6 Months	0*	-	-	-	-	-	-
20	Conductivity	µS/cm	Every 6 Months	0*	-	-	-	-	-	-
	Nitrate	mg/L	Every 6 Months	0*	-	-	-	-	-	-
	Nitrogen (Total)	mg/L	Every 6 Months	0*	-	-	-	-	-	-
	pH	pH	Every 6 Months	0*	-	-	-	-	-	-

WERRIS CREEK COAL EPL – MONTHLY SUMMARY

EPL ID	Pollutant	Units of Measure	Monitoring Frequency	No. of Measurements for the Period	Date Sampled	Date Obtained	Min Value	Mean Value	Median Value	Max Value
	Phosphorus (Total)	mg/L	Every 6 Months	0*	-	-	-	-	-	-
	Reactive Phosphorus	mg/L	Every 6 Months	0*	-	-	-	-	-	-
	Standing Water Level	Metres	Every 6 Months	0*	-	-	-	-	-	-
21	Conductivity	µS/cm	Every 6 Months	0*	-	-	-	-	-	-
	Nitrate	mg/L	Every 6 Months	0*	-	-	-	-	-	-
	Nitrogen (Total)	mg/L	Every 6 Months	0*	-	-	-	-	-	-
	pH	pH	Every 6 Months	0*	-	-	-	-	-	-
	Phosphorus (Total)	mg/L	Every 6 Months	0*	-	-	-	-	-	-
	Reactive Phosphorus	mg/L	Every 6 Months	0*	-	-	-	-	-	-
	Standing Water Level	Metres	Every 6 Months	0*	-	-	-	-	-	-
22	Conductivity	µS/cm	Every 6 Months	0*	-	-	-	-	-	-
	Nitrate	mg/L	Every 6 Months	0*	-	-	-	-	-	-
	Nitrogen (Total)	mg/L	Every 6 Months	0*	-	-	-	-	-	-
	pH	pH	Every 6 Months	0*	-	-	-	-	-	-
	Phosphorus (Total)	mg/L	Every 6 Months	0*	-	-	-	-	-	-
	Reactive Phosphorus	mg/L	Every 6 Months	0*	-	-	-	-	-	-
	Standing Water Level	Metres	Every 6 Months	0*	-	-	-	-	-	-

TLTS – too low to sample

*This reporting period does not include measurements for the 6 monthly or 3 monthly monitoring as they did not occur in this period. These will be reported in their relevant periods.

WERRIS CREEK COAL EPL – MONTHLY SUMMARY

Table 4 – Monitoring (Noise – Limits Apply)

Location	Date	Measurement Period	Start Time	Measured levels – dB(A)		Limit(s)	Weather (Inversion °C/100m & / Wind m/s / Wind Direction °)	Observations	(Potential) Non-compliance /breach	Date Obtained
				LA1, 1 Minute	LAeq, 15 Minute					
R24	9 January 2025	60 minutes	12:08pm	N/A	47	Day 37	4.1 / 164	Traffic (47), insects (36), birds (28), WCC (<20)	No	05/02/2025
R12	9 January 2025	60 minutes	11:04am	N/A	39	Day 38	3.5 / 164	Traffic (38), birds (30), WCC (<20)	No	05/02/2025
R96	9 January 2025	60 minutes	2:50pm	N/A	41	Day 38	4.6 / 168	Insects (40), birds (34), WCC (<20)	No	05/02/2025
R98	9 January 2025	60 minutes	1:20pm	N/A	51	Day 35	3.8 / 153	Birds (51), WCC (<20)	No	05/02/2025
R57	9 January 2025	60 minutes	10:47am	N/A	39	Day 35	2.7 / 163	Traffic (37), birds (34), dogs (26), WCC (<20)	No	05/02/2025
R24	9 January 2025	60 minutes	9:30pm	<20	46	Night 37	Lapse / 3.3 / 161	Traffic (46), insects (35), WCC (<20)	No	05/02/2025
R12	9 January 2025	60 minutes	8:27pm	<20	43	Night 38	Lapse / 3.9 / 167	Insects (41), train (38), traffic (29), WCC (<20)	No	05/02/2025
R96	9 January 2025	60 minutes	7:13pm	<20	39	Night 37	Lapse / 4.8 / 174	Insects (39), WCC (<20)	No	05/02/2025
R98	9 January 2025	60 minutes	7:04pm	<20	44	Night 35	Lapse / 4.6 / 170	Insects (43), birds (37), WCC (<20)	No	05/02/2025
R57	9 January 2025	60 minutes	8:56pm	<20	51	Night 35	Lapse / 3.3 / 164	Train (50), insects (45), traffic (32), dogs (28), WCC (<20)	No	05/02/2025

NM = Not Measurable. This denotes noise from the mine was audible at low levels however cannot be quantified.

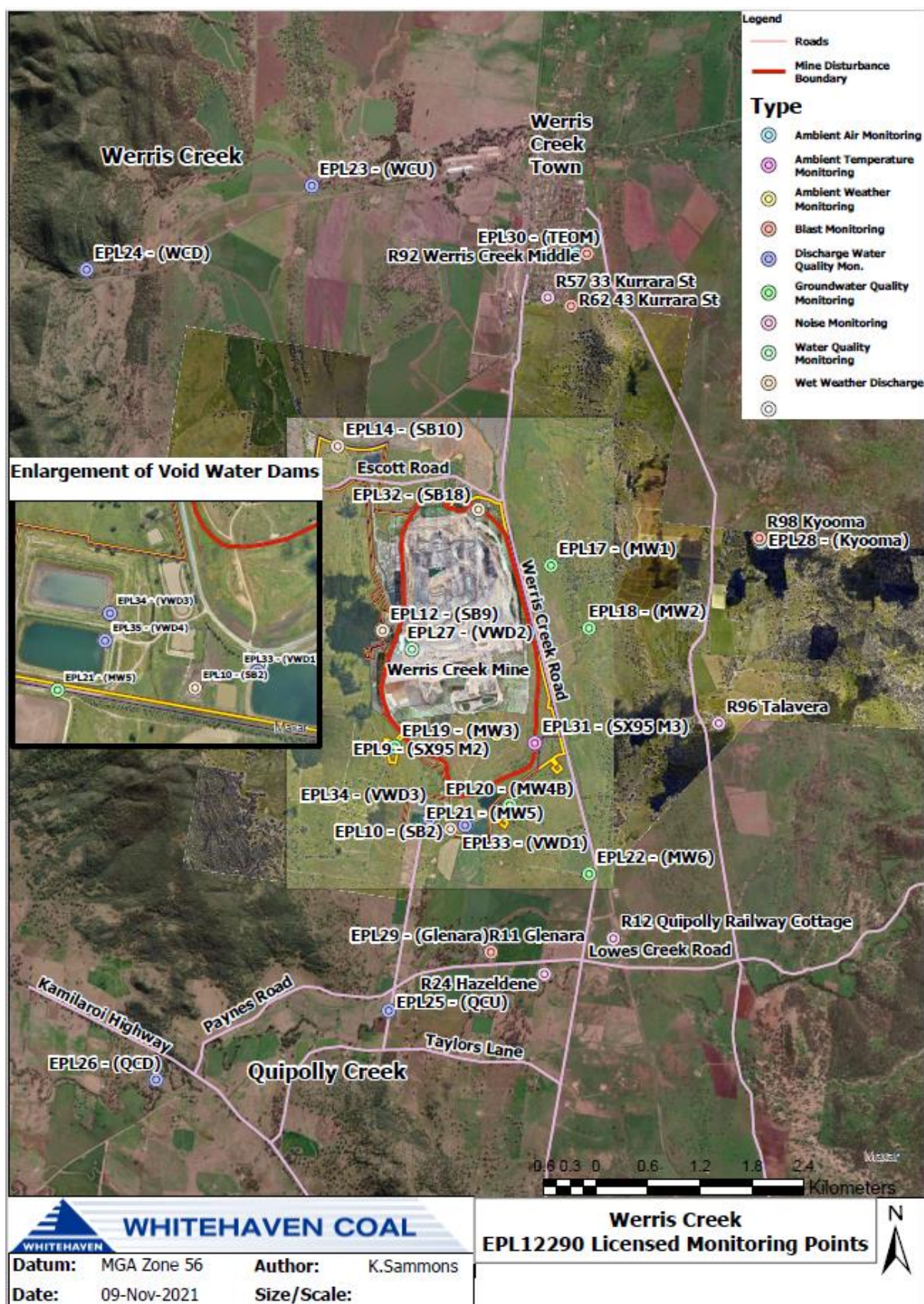
IA = Inaudible.

NaN = result was 'not a number'

WERRIS CREEK COAL EPL – MONTHLY SUMMARY
Table 5 – Monitoring (Blasts – Limits Apply)

Location	Parameter	Units of Measure	Frequency	No. of Blasts for the Month	Average Value	Max Value	100%ile Limit	(Potential) Non-compliance /breach	Date Obtained
R11	Blast Noise	dB (Lin Peak)	Every Blast	-	-	-	120.0	-	-
	Blast Vibration	mm/s	Every Blast	-	-	-	10.0	-	-
R98	Blast Noise	dB (Lin Peak)	Every Blast	-	-	-	120.0	-	-
	Blast Vibration	mm/s	Every Blast	-	-	-	10.0	-	-
R62	Blast Noise	dB (Lin Peak)	Every Blast	-	-	-	120.0	-	-
	Blast Vibration	mm/s	Every Blast	-	-	-	10.0	-	-
R92	Blast Noise	dB (Lin Peak)	Every Blast	-	-	-	120.0	-	-
	Blast Vibration	mm/s	Every Blast	-	-	-	10.0	-	-

WERRIS CREEK COAL EPL – MONTHLY SUMMARY



WERRIS CREEK COAL EPL – MONTHLY SUMMARY

Site Information

EPL No.: 12290

EPA Website Link: <http://www.epa.nsw.gov.au/prpoeoapp/ViewPOEOLicence.aspx?DOCID=31280&SYSUID=1&LICID=12290>

Licensee: Werris Creek Coal Pty Limited

Premises: Werris Creek Coal, 1435 Werris Creek Road, WERRIS CREEK NSW 2341

EPL Monitoring Points: See figure at end of document

Sampling Period: FEBRUARY 2025

Obtained Date: 24/03/2025

Publication Date: 25/03/2025

Table 1 - No Pollutant Limits Apply

EPL ID	Pollutant	Units of Measure	Monitoring Frequency	No. of Measurements for the Month	Date Sampled	Date Obtained	Min Value	Mean Value	Median Value	Max Value
28	PM10	µg/m ³	Every 6 days	6	23/02/2025	06/03/2025	5.6	8.3	8.1	11.5
	Solid Particles	g/m ² /month	Continuous	1	3/02/2025	17/02/2025	0.7	0.7	0.7	0.7
29	PM10	µg/m ³	Every 6 days	6	23/02/2025	21/03/2025	8.2	17.6	13.5	35.3
	Solid Particles	g/m ² /month	Continuous	1	3/02/2025	17/02/2025	0.5	0.5	0.5	0.5
30	PM10	µg/m ³	Continuous	Continuous	28/02/2025	01/03/2025	6.9	12.9	12.8	20.5
	Solid Particles	g/m ² /month	Continuous	1	3/02/2025	17/02/2025	1.3	1.3	1.3	1.3
10	Conductivity	µS/cm	Special Frequency 1	0*	-	-	-	-	-	-
	Nitrate	mg/L	Special Frequency 1	0*	-	-	-	-	-	-
	Nitrogen (Total)	mg/L	Special Frequency 1	0*	-	-	-	-	-	-
	Phosphorus (Total)	mg/L	Special Frequency 1	0*	-	-	-	-	-	-
	Reactive Phosphorus	mg/L	Special Frequency 1	0*	-	-	-	-	-	-
12	Conductivity	µS/cm	Special Frequency 1	0*	-	-	-	-	-	-
	Nitrate	mg/L	Special Frequency 1	0*	-	-	-	-	-	-
	Nitrogen (Total)	mg/L	Special Frequency 1	0*	-	-	-	-	-	-
	Phosphorus (Total)	mg/L	Special Frequency 1	0*	-	-	-	-	-	-
	Reactive Phosphorus	mg/L	Special Frequency 1	0*	-	-	-	-	-	-

WERRIS CREEK COAL EPL – MONTHLY SUMMARY

EPL ID	Pollutant	Units of Measure	Monitoring Frequency	No. of Measurements for the Month	Date Sampled	Date Obtained	Min Value	Mean Value	Median Value	Max Value
14	Conductivity	µS/cm	Special Frequency 1	0*	-	-	-	-	-	-
	Nitrate	mg/L	Special Frequency 1	0*	-	-	-	-	-	-
	Nitrogen (Total)	mg/L	Special Frequency 1	0*	-	-	-	-	-	-
	Phosphorus (Total)	mg/L	Special Frequency 1	0*	-	-	-	-	-	-
	Reactive Phosphorus	mg/L	Special Frequency 1	0*	-	-	-	-	-	-
32	Conductivity	µS/cm	Special Frequency 1	0*	-	-	-	-	-	-
	Nitrate	mg/L	Special Frequency 1	0*	-	-	-	-	-	-
	Nitrogen (Total)	mg/L	Special Frequency 1	0*	-	-	-	-	-	-
	Oil and Grease	mg/L	Special Frequency 1	0*	-	-	-	-	-	-
	pH	pH	Special Frequency 1	0*	-	-	-	-	-	-
	Phosphorus (Total)	mg/L	Special Frequency 1	0*	-	-	-	-	-	-
	Reactive Phosphorus	mg/L	Special Frequency 1	0*	-	-	-	-	-	-
23	Total Suspended Solids	mg/L	Special Frequency 1	0*	-	-	-	-	-	-
	Conductivity	µS/cm	Special Frequency 2	0*	-	-	-	-	-	-
	Nitrate	mg/L	Special Frequency 2	0*	-	-	-	-	-	-
	Nitrogen (Total)	mg/L	Special Frequency 2	0*	-	-	-	-	-	-
	Oil and Grease	mg/L	Special Frequency 2	0*	-	-	-	-	-	-
	pH	pH	Special Frequency 2	0*	-	-	-	-	-	-
	Phosphorus (Total)	mg/L	Special Frequency 2	0*	-	-	-	-	-	-
	Reactive Phosphorus	mg/L	Special Frequency 2	0*	-	-	-	-	-	-
24	Total Suspended Solids	mg/L	Special Frequency 2	0*	-	-	-	-	-	-
	Conductivity	µS/cm	Special Frequency 2	0*	-	-	-	-	-	-
	Nitrate	mg/L	Special Frequency 2	0*	-	-	-	-	-	-
	Nitrogen (Total)	mg/L	Special Frequency 2	0*	-	-	-	-	-	-
24	Oil and Grease	mg/L	Special Frequency 2	0*	-	-	-	-	-	-

WERRIS CREEK COAL EPL – MONTHLY SUMMARY

EPL ID	Pollutant	Units of Measure	Monitoring Frequency	No. of Measurements for the Month	Date Sampled	Date Obtained	Min Value	Mean Value	Median Value	Max Value
	pH	pH	Special Frequency 2	0*	-	-	-	-	-	-
	Phosphorus (Total)	mg/L	Special Frequency 2	0*	-	-	-	-	-	-
	Reactive Phosphorus	mg/L	Special Frequency 2	0*	-	-	-	-	-	-
	Total Suspended Solids	mg/L	Special Frequency 2	0*	-	-	-	-	-	-
25	Conductivity	µS/cm	Special Frequency 2	0*	-	-	-	-	-	-
	Nitrate	mg/L	Special Frequency 2	0*	-	-	-	-	-	-
	Nitrogen (Total)	mg/L	Special Frequency 2	0*	-	-	-	-	-	-
	Oil and Grease	mg/L	Special Frequency 2	0*	-	-	-	-	-	-
	pH	pH	Special Frequency 2	0*	-	-	-	-	-	-
	Phosphorus (Total)	mg/L	Special Frequency 2	0*	-	-	-	-	-	-
	Reactive Phosphorus	mg/L	Special Frequency 2	0*	-	-	-	-	-	-
26	Total Suspended Solids	mg/L	Special Frequency 2	0*	-	-	-	-	-	-
	Conductivity	µS/cm	Special Frequency 2	0*	-	-	-	-	-	-
	Nitrate	mg/L	Special Frequency 2	0*	-	-	-	-	-	-
	Nitrogen (Total)	mg/L	Special Frequency 2	0*	-	-	-	-	-	-
	Oil and Grease	mg/L	Special Frequency 2	0*	-	-	-	-	-	-
	pH	pH	Special Frequency 2	0*	-	-	-	-	-	-
	Phosphorus (Total)	mg/L	Special Frequency 2	0*	-	-	-	-	-	-
	Reactive Phosphorus	mg/L	Special Frequency 2	0*	-	-	-	-	-	-
33	Total Suspended Solids	mg/L	Special Frequency 2	0*	-	-	-	-	-	-
	Aluminium (dissolved)	mg/L	Special Frequency 3	1	19/02/2025	28/02/2025	<0.01	<0.01	<0.01	<0.01
	Arsenic (dissolved)	mg/L	Special Frequency 3	1	19/02/2025	28/02/2025	0.001	0.001	0.001	0.001
	Barium (dissolved)	mg/L	Special Frequency 3	1	19/02/2025	28/02/2025	0.073	0.073	0.073	0.073

WERRIS CREEK COAL EPL – MONTHLY SUMMARY

EPL ID	Pollutant	Units of Measure	Monitoring Frequency	No. of Measurements for the Month	Date Sampled	Date Obtained	Min Value	Mean Value	Median Value	Max Value
	Beryllium (dissolved)	mg/L	Special Frequency 3	1	19/02/2025	28/02/2025	<0.001	<0.001	<0.001	<0.001
	BOD	mg/L	Special Frequency 3	1	19/02/2025	28/02/2025	<2	<2	<2	<2
	Cadmium (dissolved)	mg/L	Special Frequency 3	1	19/02/2025	28/02/2025	<0.0001	<0.0001	<0.0001	<0.0001
	Chromium (dissolved)	mg/L	Special Frequency 3	1	19/02/2025	28/02/2025	<0.001	<0.001	<0.001	<0.001
	Cobalt (dissolved)	mg/L	Special Frequency 3	1	19/02/2025	28/02/2025	<0.001	<0.001	<0.001	<0.001
	Copper (dissolved)	mg/L	Special Frequency 3	1	19/02/2025	28/02/2025	<0.001	<0.001	<0.001	<0.001
	Iron (dissolved)	mg/L	Special Frequency 3	1	19/02/2025	28/02/2025	<0.05	<0.05	<0.05	<0.05
	Lead (dissolved)	mg/L	Special Frequency 3	1	19/02/2025	28/02/2025	<0.001	<0.001	<0.001	<0.001
	Magnesium	mg/L	Special Frequency 3	1	19/02/2025	28/02/2025	47	47	47	47
	Manganese (dissolved)	mg/L	Special Frequency 3	1	19/02/2025	28/02/2025	<0.001	<0.001	<0.001	<0.001
	Nickel (dissolved)	mg/L	Special Frequency 3	1	19/02/2025	28/02/2025	0.002	0.002	0.002	0.002
	Potassium	mg/L	Special Frequency 3	1	19/02/2025	28/02/2025	21	21	21	21
	Selenium (dissolved)	mg/L	Special Frequency 3	1	19/02/2025	28/02/2025	<0.01	<0.01	<0.01	<0.01
	Sodium	mg/L	Special Frequency 3	1	19/02/2025	28/02/2025	216	216	216	216
	Total dissolved solids	mg/L	Special Frequency 3	1	19/02/2025	28/02/2025	1290	1290	1290	1290
	Vanadium (dissolved)	mg/L	Special Frequency 3	1	19/02/2025	28/02/2025	<0.01	<0.01	<0.01	<0.01
	Zinc (dissolved)	mg/L	Special Frequency 3	1	19/02/2025	28/02/2025	0.005	0.005	0.005	0.005
34	Aluminium (dissolved)	mg/L	Special Frequency 3	0*	-	-	-	-	-	-
	Arsenic (dissolved)	mg/L	Special Frequency 3	0*	-	-	-	-	-	-
	Barium (dissolved)	mg/L	Special Frequency 3	0*	-	-	-	-	-	-
	Beryllium (dissolved)	mg/L	Special Frequency 3	0*	-	-	-	-	-	-
	BOD	mg/L	Special Frequency 3	0*	-	-	-	-	-	-
	Cadmium (dissolved)	mg/L	Special Frequency 3	0*	-	-	-	-	-	-
	Chromium (dissolved)	mg/L	Special Frequency 3	0*	-	-	-	-	-	-

WERRIS CREEK COAL EPL – MONTHLY SUMMARY

EPL ID	Pollutant	Units of Measure	Monitoring Frequency	No. of Measurements for the Month	Date Sampled	Date Obtained	Min Value	Mean Value	Median Value	Max Value
	Cobalt (dissolved)	mg/L	Special Frequency 3	0*	-	-	-	-	-	-
	Copper (dissolved)	mg/L	Special Frequency 3	0*	-	-	-	-	-	-
	Iron (dissolved)	mg/L	Special Frequency 3	0*	-	-	-	-	-	-
	Lead (dissolved)	mg/L	Special Frequency 3	0*	-	-	-	-	-	-
	Magnesium	mg/L	Special Frequency 3	0*	-	-	-	-	-	-
	Manganese (dissolved)	mg/L	Special Frequency 3	0*	-	-	-	-	-	-
	Nickel (dissolved)	mg/L	Special Frequency 3	0*	-	-	-	-	-	-
	Potassium	mg/L	Special Frequency 3	0*	-	-	-	-	-	-
	Selenium (dissolved)	mg/L	Special Frequency 3	0*	-	-	-	-	-	-
	Sodium	mg/L	Special Frequency 3	0*	-	-	-	-	-	-
	Total dissolved solids	mg/L	Special Frequency 3	0*	-	-	-	-	-	-
	Vanadium (dissolved)	mg/L	Special Frequency 3	0*	-	-	-	-	-	-
	Zinc (dissolved)	mg/L	Special Frequency 3	0*	-	-	-	-	-	-
35	Aluminium (dissolved)	mg/L	Special Frequency 3	0*	-	-	-	-	-	-
	Arsenic (dissolved)	mg/L	Special Frequency 3	0*	-	-	-	-	-	-
	Barium (dissolved)	mg/L	Special Frequency 3	0*	-	-	-	-	-	-
	Beryllium (dissolved)	mg/L	Special Frequency 3	0*	-	-	-	-	-	-
	BOD	mg/L	Special Frequency 3	0*	-	-	-	-	-	-
	Cadmium (dissolved)	mg/L	Special Frequency 3	0*	-	-	-	-	-	-
	Chromium (dissolved)	mg/L	Special Frequency 3	0*	-	-	-	-	-	-
	Cobalt (dissolved)	mg/L	Special Frequency 3	0*	-	-	-	-	-	-
	Copper (dissolved)	mg/L	Special Frequency 3	0*	-	-	-	-	-	-
	Iron (dissolved)	mg/L	Special Frequency 3	0*	-	-	-	-	-	-
	Lead (dissolved)	mg/L	Special Frequency 3	0*	-	-	-	-	-	-

WERRIS CREEK COAL EPL – MONTHLY SUMMARY

EPL ID	Pollutant	Units of Measure	Monitoring Frequency	No. of Measurements for the Month	Date Sampled	Date Obtained	Min Value	Mean Value	Median Value	Max Value
	Magnesium	mg/L	Special Frequency 3	0*	-	-	-	-	-	-
	Manganese (dissolved)	mg/L	Special Frequency 3	0*	-	-	-	-	-	-
	Nickel (dissolved)	mg/L	Special Frequency 3	0*	-	-	-	-	-	-
	Potassium	mg/L	Special Frequency 3	0*	-	-	-	-	-	-
	Selenium (dissolved)	mg/L	Special Frequency 3	0*	-	-	-	-	-	-
	Sodium	mg/L	Special Frequency 3	0*	-	-	-	-	-	-
	Total dissolved solids	mg/L	Special Frequency 3	0*	-	-	-	-	-	-
	Vanadium (dissolved)	mg/L	Special Frequency 3	0*	-	-	-	-	-	-
	Zinc (dissolved)	mg/L	Special Frequency 3	0*	-	-	-	-	-	-

¹NS – No sample.

'c' = contaminated sample

Table 2 - Pollutant Limits Apply

EPL ID	Pollutant	Units of Measure	Monitoring Frequency	No. of samples for the Month	Date Sampled	Date Obtained	Min Value	Max Value	100%ile Limit	Exceedance (Yes/No)	Comments
10	Total Suspended Solids	mg/L	Special Frequency 1	0*	-	-	-	-	50~	No	
	Oil and Grease	mg/L	Special Frequency 1	0*	-	-	-	-	10	No	
	pH	pH	Special Frequency 1	0*	-	-	-	-	6.5-8.5	No	
12	Total Suspended Solids	mg/L	Special Frequency 1	0*	-	-	-	-	50~	No	
	Oil and Grease	mg/L	Special Frequency 1	0*	-	-	-	-	10	No	

WERRIS CREEK COAL EPL – MONTHLY SUMMARY

EPL ID	Pollutant	Units of Measure	Monitoring Frequency	No. of samples for the Month	Date Sampled	Date Obtained	Min Value	Max Value	100%ile Limit	Exceedance (Yes/No)	Comments
	pH	pH	Special Frequency 1	0*	-	-	-	-	6.5-8.5	No	
14	Total Suspended Solids	mg/L	Special Frequency 1	0*	-	-	-	-	50~	No	
	Oil and Grease	mg/L	Special Frequency 1	0*	-	-	-	-	10	No	
	pH	pH	Special Frequency 1	0*	-	-	-	-	6.5-8.5	No	
32	Total Suspended Solids	mg/L	Special Frequency 1	0*	-	-	-	-	2000	No	
	Oil and Grease	mg/L	Special Frequency 1	0*	-	-	-	-	10	No	
	pH	pH	Special Frequency 1	0*	-	-	-	-	9	No	
33	Electrical Conductivity	µS/cm	Special Frequency 4	0*	-	-	-	-	2000	No	
	Oil and Grease	mg/L	Special Frequency 3	0*	-	-	-	-	10	No	
	pH	pH	Special Frequency 4	0*	-	-	-	-	9	No	
34	Electrical Conductivity	µS/cm	Special Frequency 4	0*	-	-	-	-	2000	No	
	Oil and Grease	mg/L	Special Frequency 3	0*	-	-	-	-	10	No	
	pH	pH	Special Frequency 4	0*	-	-	-	-	9	No	
35	Electrical Conductivity	µS/cm	Special Frequency 4	0*	-	-	-	-	2000	No	
	Oil and Grease	mg/L	Special Frequency 3	0*	-	-	-	-	10	No	
	pH	pH	Special Frequency 4	0*	-	-	-	-	9	No	

~ Total Suspended Solids permitted to exceed 50mg/L if 5 day rainfall is greater than 39.2mm prior to discharge

*No Special Frequency Events occurred during Sampling Period, therefore no data has been collected.

The discharge sample was inconsistent with pre-discharge sampling of the dam and has been discussed with the EPA. This will be documented in the Annual Return.

- For the purposes of this condition, Special Frequency 1 means as soon as practicable after overflow commences and in any case not more than 12 hours after any overflow commencing.



WERRIS CREEK COAL EPL – MONTHLY SUMMARY

- For the purposes of this condition, Special Frequency 2 means within 12 hours after any overflow from a storage dam(s) on the premises occurring.
- For the purposes of this condition, Special Frequency 3 means every three months. If no mine void water is planned to be provided for agricultural purposes within the three months following scheduled sampling, then sampling is not required.
- For the purposes of this condition, Special Frequency 4 means prior to, but not more than 24 hours prior to providing mine void water for agricultural purposes and then weekly thereafter, until the provision of water ceases. Samples are only required to be taken from the void water dam that is supplying water for agricultural purposes.

WERRIS CREEK COAL EPL – MONTHLY SUMMARY

Table 3 – Monitoring (Quarterly & 6 monthly – no limits apply)

EPL ID	Pollutant	Units of Measure	Monitoring Frequency	No. of Measurements for the Period	Date Sampled	Date Obtained	Min Value	Mean Value	Median Value	Max Value
16	Conductivity	µS/cm	Every 3 Months	1	19/02/2025	28/02/2025	2000	2000	2000	2000
	Nitrate	mg/L	Every 3 Months	1	19/02/2025	28/02/2025	<0.01	<0.01	<0.01	<0.01
	Nitrogen (Total)	mg/L	Every 3 Months	1	19/02/2025	28/02/2025	0.4	0.4	0.4	0.4
	Oil and Grease	mg/L	Every 3 Months	1	19/02/2025	28/02/2025	<5	<5	<5	<5
	pH	pH	Every 3 Months	1	19/02/2025	28/02/2025	8.12	8.12	8.12	8.12
	Phosphorus (Total)	mg/L	Every 3 Months	1	19/02/2025	28/02/2025	<0.01	<0.01	<0.01	<0.01
	Reactive Phosphorus	mg/L	Every 3 Months	1	19/02/2025	28/02/2025	<0.01	<0.01	<0.01	<0.01
	Total Suspended Solids	mg/L	Every 3 Months	1	19/02/2025	28/02/2025	<5	<5	<5	<5
27	Conductivity	µS/cm	Every 3 Months	0*	-	-	-	-	-	-
	Nitrate	mg/L	Every 3 Months	0*	-	-	-	-	-	-
	Nitrogen (Total)	mg/L	Every 3 Months	0*	-	-	-	-	-	-
	Oil and Grease	mg/L	Every 3 Months	0*	-	-	-	-	-	-
	pH	pH	Every 3 Months	0*	-	-	-	-	-	-
	Phosphorus (Total)	mg/L	Every 3 Months	0*	-	-	-	-	-	-
	Reactive Phosphorus	mg/L	Every 3 Months	0*	-	-	-	-	-	-
	Total Suspended Solids	mg/L	Every 3 Months	0*	-	-	-	-	-	-
17	Conductivity	µS/cm	Every 6 Months	1	19/02/2025	27/02/2025	466	466	466	466
	Nitrate	mg/L	Every 6 Months	1	19/02/2025	27/02/2025	0.06	0.06	0.06	0.06
	Nitrogen (Total)	mg/L	Every 6 Months	1	19/02/2025	27/02/2025	3.8	3.8	3.8	3.8
	pH	pH	Every 6 Months	1	19/02/2025	27/02/2025	7.18	7.18	7.18	7.18

WERRIS CREEK COAL EPL – MONTHLY SUMMARY

EPL ID	Pollutant	Units of Measure	Monitoring Frequency	No. of Measurements for the Period	Date Sampled	Date Obtained	Min Value	Mean Value	Median Value	Max Value
	Phosphorus (Total)	mg/L	Every 6 Months	1	19/02/2025	27/02/2025	0.16	0.16	0.16	0.16
	Reactive Phosphorus	mg/L	Every 6 Months	1	19/02/2025	27/02/2025	<0.01	<0.01	<0.01	<0.01
	Standing Water Level	Metres	Every 6 Months	1	19/02/2025	27/02/2025	57.09	57.09	57.09	57.09
18	Conductivity	µS/cm	Every 6 Months	1	19/02/2025	No water	-	-	-	-
	Nitrate	mg/L	Every 6 Months	1	19/02/2025	No water	-	-	-	-
	Nitrogen (Total)	mg/L	Every 6 Months	1	19/02/2025	No water	-	-	-	-
	pH	pH	Every 6 Months	1	19/02/2025	No water	-	-	-	-
	Phosphorus (Total)	mg/L	Every 6 Months	1	19/02/2025	No water	-	-	-	-
	Reactive Phosphorus	mg/L	Every 6 Months	1	19/02/2025	No water	-	-	-	-
	Standing Water Level	Metres	Every 6 Months	1	19/02/2025	27/02/2025	29.23	29.23	29.23	29.23
19	Conductivity	µS/cm	Every 6 Months	1	26/02/2025	10/03/2025	2560	2560	2560	2560
	Nitrate	mg/L	Every 6 Months	1	26/02/2025	10/03/2025	11.7	11.7	11.7	11.7
	Nitrogen (Total)	mg/L	Every 6 Months	1	26/02/2025	10/03/2025	14	14	14	14
	pH	pH	Every 6 Months	1	26/02/2025	10/03/2025	8.01	8.01	8.01	8.01
	Phosphorus (Total)	mg/L	Every 6 Months	1	26/02/2025	10/03/2025	0.07	0.07	0.07	0.07
	Reactive Phosphorus	mg/L	Every 6 Months	1	26/02/2025	10/03/2025	0.06	0.06	0.06	0.06
	Standing Water Level	Metres	Every 6 Months	1	26/02/2025	10/03/2025	15.38	15.38	15.38	15.38
20	Conductivity	µS/cm	Every 6 Months	1	26/02/2025	10/03/2025	954	954	954	954
	Nitrate	mg/L	Every 6 Months	1	26/02/2025	10/03/2025	0.33	0.33	0.33	0.33
	Nitrogen (Total)	mg/L	Every 6 Months	1	26/02/2025	10/03/2025	0.7	0.7	0.7	0.7
	pH	pH	Every 6 Months	1	26/02/2025	10/03/2025	7.89	7.89	7.89	7.89

WERRIS CREEK COAL EPL – MONTHLY SUMMARY

EPL ID	Pollutant	Units of Measure	Monitoring Frequency	No. of Measurements for the Period	Date Sampled	Date Obtained	Min Value	Mean Value	Median Value	Max Value
	Phosphorus (Total)	mg/L	Every 6 Months	1	26/02/2025	10/03/2025	0.2	0.2	0.2	0.2
	Reactive Phosphorus	mg/L	Every 6 Months	1	26/02/2025	10/03/2025	0.14	0.14	0.14	0.14
	Standing Water Level	Metres	Every 6 Months	1	26/02/2025	10/03/2025	12.39	12.39	12.39	12.39
21	Conductivity	µS/cm	Every 6 Months	1	26/02/2025	10/03/2025	2180	2180	2180	2180
	Nitrate	mg/L	Every 6 Months	1	26/02/2025	10/03/2025	1.78	1.78	1.78	1.78
	Nitrogen (Total)	mg/L	Every 6 Months	1	26/02/2025	10/03/2025	2.8	2.8	2.8	2.8
	pH	pH	Every 6 Months	1	26/02/2025	10/03/2025	7.87	7.87	7.87	7.87
	Phosphorus (Total)	mg/L	Every 6 Months	1	26/02/2025	10/03/2025	0.69	0.69	0.69	0.69
	Reactive Phosphorus	mg/L	Every 6 Months	1	26/02/2025	10/03/2025	0.55	0.55	0.55	0.55
	Standing Water Level	Metres	Every 6 Months	1	26/02/2025	10/03/2025	8.62	8.62	8.62	8.62
22	Conductivity	µS/cm	Every 6 Months	1	20/02/2025	03/03/2025	1710	1710	1710	1710
	Nitrate	mg/L	Every 6 Months	1	20/02/2025	03/03/2025	3.41	3.41	3.41	3.41
	Nitrogen (Total)	mg/L	Every 6 Months	1	20/02/2025	03/03/2025	4.2	4.2	4.2	4.2
	pH	pH	Every 6 Months	1	20/02/2025	03/03/2025	7.6	7.6	7.6	7.6
	Phosphorus (Total)	mg/L	Every 6 Months	1	20/02/2025	03/03/2025	0.68	0.68	0.68	0.68
	Reactive Phosphorus	mg/L	Every 6 Months	1	20/02/2025	03/03/2025	0.16	0.16	0.16	0.16
	Standing Water Level	Metres	Every 6 Months	1	20/02/2025	03/03/2025	13.22	13.22	13.22	13.22

TLTS – too low to sample

*This reporting period does not include measurements for the 6 monthly or 3 monthly monitoring as they did not occur in this period. These will be reported in their relevant periods.

WERRIS CREEK COAL EPL – MONTHLY SUMMARY

Table 4 – Monitoring (Noise – Limits Apply)

Location	Date	Measurement Period	Start Time	Measured levels – dB(A)		Limit(s)	Weather (Inversion °C/100m & / Wind m/s / Wind Direction °)	Observations	(Potential) Non-compliance /breach	Date Obtained
				LA1, 1 Minute	LAeq, 15 Minute					
R24	24 February 2025	60 minutes	1:20pm	N/A	32	Day 37	2.9 / 205	Birds (29), traffic (29), WCC (<20)	No	18/03/2025
R12	24 February 2025	60 minutes	2:28pm	N/A	66	Day 38	1.6 / 217	Trains (66), birds (42), WCC (<20)	No	18/03/2025
R96	24 February 2025	60 minutes	12:15pm	N/A	37	Day 38	1.8 / 178	Birds (34), wind in trees (33), traffic (24), WCC (<20)	No	18/03/2025
R98	24 February 2025	60 minutes	12:32pm	N/A	32	Day 35	1.2 / 196	Birds (30), insects (28), WCC (<20)	No	18/03/2025
R57	25 February 2025	60 minutes	9:25am	N/A	44	Day 35	2.7 / 164	Birds (43), traffic (37), WCC (<20)	No	18/03/2025
R24	24 February 2025	60 minutes	9:54pm	<20	51	Night 37	+1.4 / 2.3 / 079	Traffic (51), insects (40), WCC (<20)	No	18/03/2025
R12	24 February 2025	60 minutes	8:41pm	<20	42	Night 38	Lapse / 2.2 / 120	Insects (42), WCC (<20)	No	18/03/2025
R96	24 February 2025	60 minutes	7:32pm	<20	41	Night 37	Lapse / 2.9 / 158	Insects (41), traffic (22), WCC (<20)	No	18/03/2025
R98	24 February 2025	60 minutes	7:13pm	<20	43	Night 35	Lapse / 2.5 / 165	Insects (43), WCC (<20)	No	18/03/2025
R57	24 February 2025	60 minutes	9:44pm	<20	47	Night 35	+0.8 / 2.2 / 104	Traffic (45), insects (42), WCC (<20)	No	18/03/2025

NM = Not Measurable. This denotes noise from the mine was audible at low levels however cannot be quantified.

IA = Inaudible.

NaN = result was 'not a number'

WERRIS CREEK COAL EPL – MONTHLY SUMMARY
Table 5 – Monitoring (Blasts – Limits Apply)

Location	Parameter	Units of Measure	Frequency	No. of Blasts for the Month	Average Value	Max Value	100%ile Limit	(Potential) Non-compliance /breach	Date Obtained
R11	Blast Noise	dB (Lin Peak)	Every Blast	-	-	-	120.0	-	-
	Blast Vibration	mm/s	Every Blast	-	-	-	10.0	-	-
R98	Blast Noise	dB (Lin Peak)	Every Blast	-	-	-	120.0	-	-
	Blast Vibration	mm/s	Every Blast	-	-	-	10.0	-	-
R62	Blast Noise	dB (Lin Peak)	Every Blast	-	-	-	120.0	-	-
	Blast Vibration	mm/s	Every Blast	-	-	-	10.0	-	-
R92	Blast Noise	dB (Lin Peak)	Every Blast	-	-	-	120.0	-	-
	Blast Vibration	mm/s	Every Blast	-	-	-	10.0	-	-

WERRIS CREEK COAL EPL – MONTHLY SUMMARY

